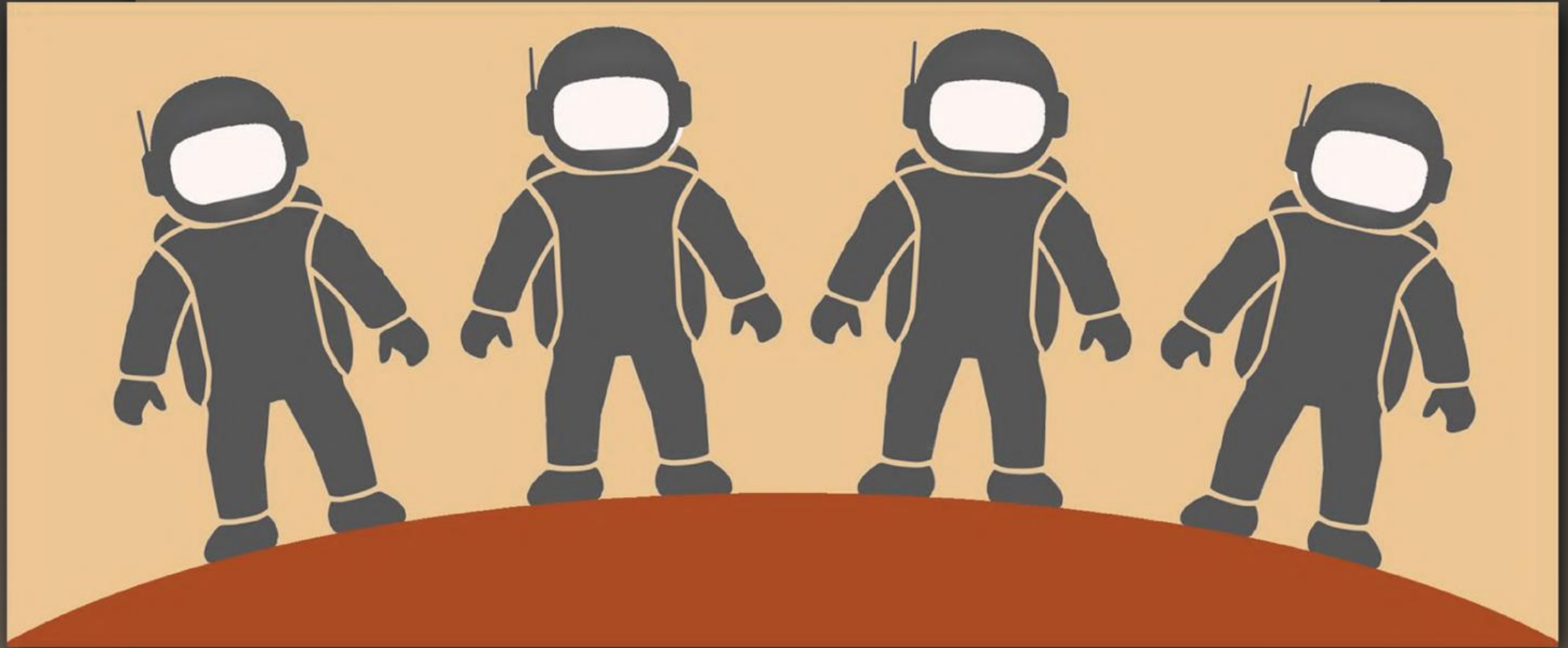


MODEL **MARS**

A PLATFORM FOR EXPLORING SPACE,
SOCIETY, & SUSTAINABILITY

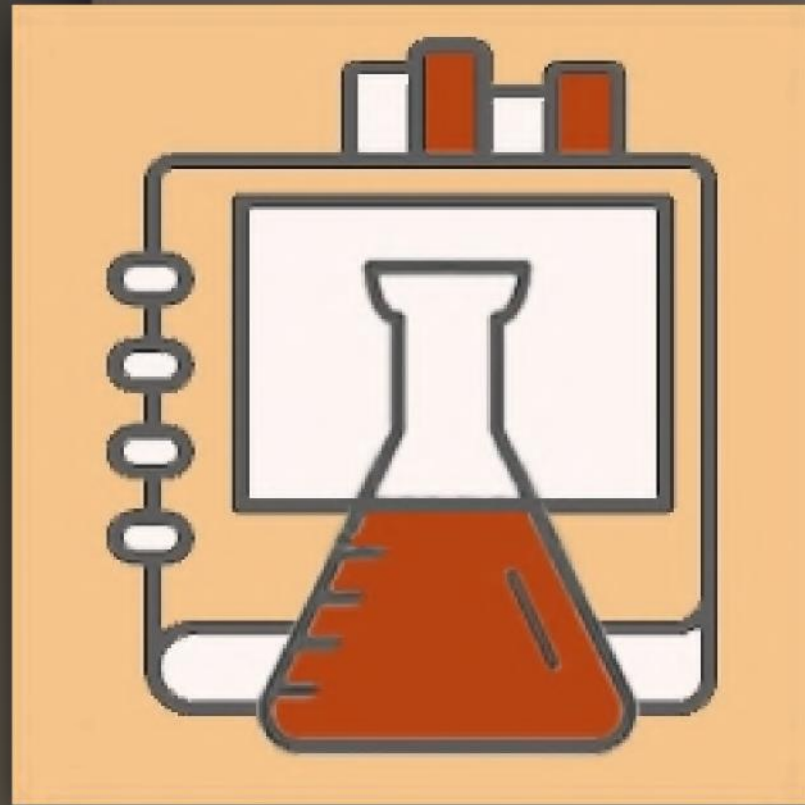


Jennifer BRESLIN ¹, Jan MILLSAPPS ¹, Rakhi Rajini ¹, and Jen BLANK ^{1,2}

¹ Futuristas; ² Blue Marble Space Institute of Science

MODEL MARS

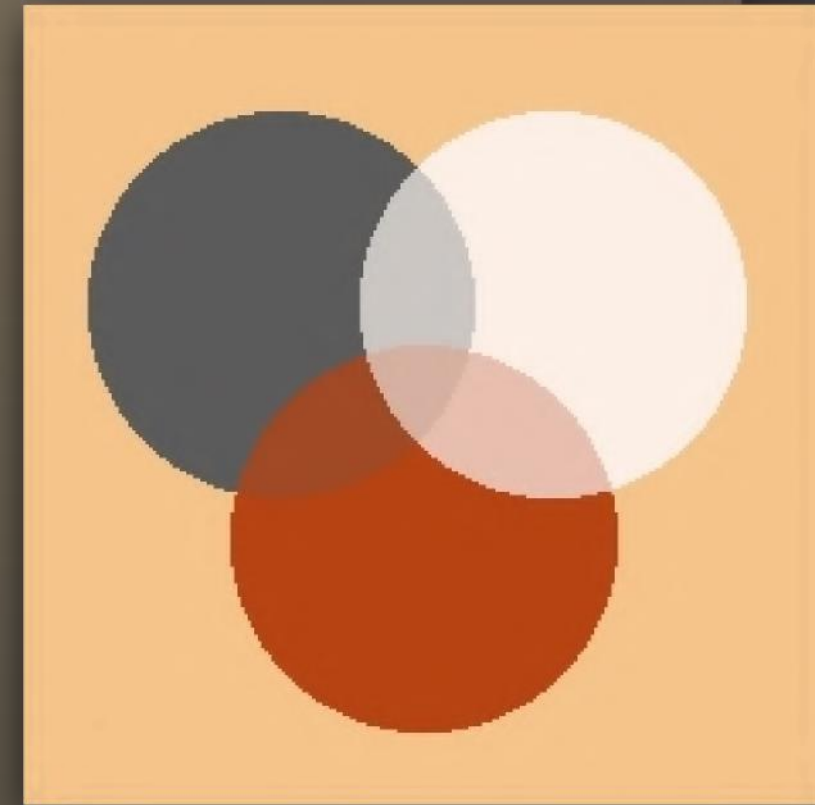
...is a collaborative, role-playing game to examine a possible future on Mars.



SCIENCE & TECH



WORLD-BUILDING

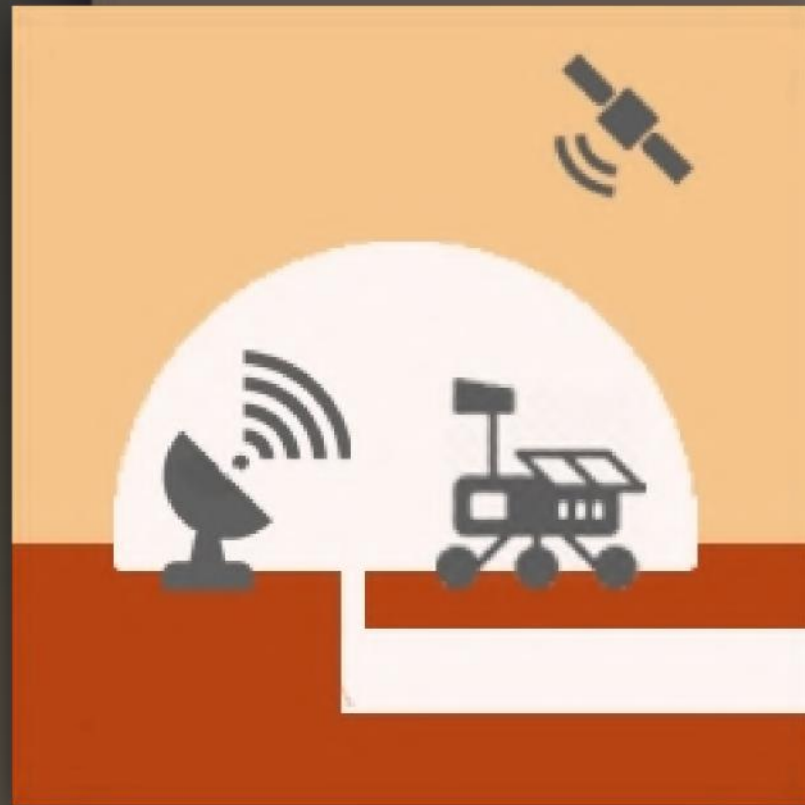


COLLABORATION

Inspired by the Model United Nations, Model Mars uses imagination and teamwork, storytelling and our knowledge of Mars and Space. Imagining life on Mars in the Near Future, participants discover parallels with life on Earth today.

MODEL MARS

...addresses challenges that could arise once a human presence is established on the Red Planet.



It's 2075 on Mars.

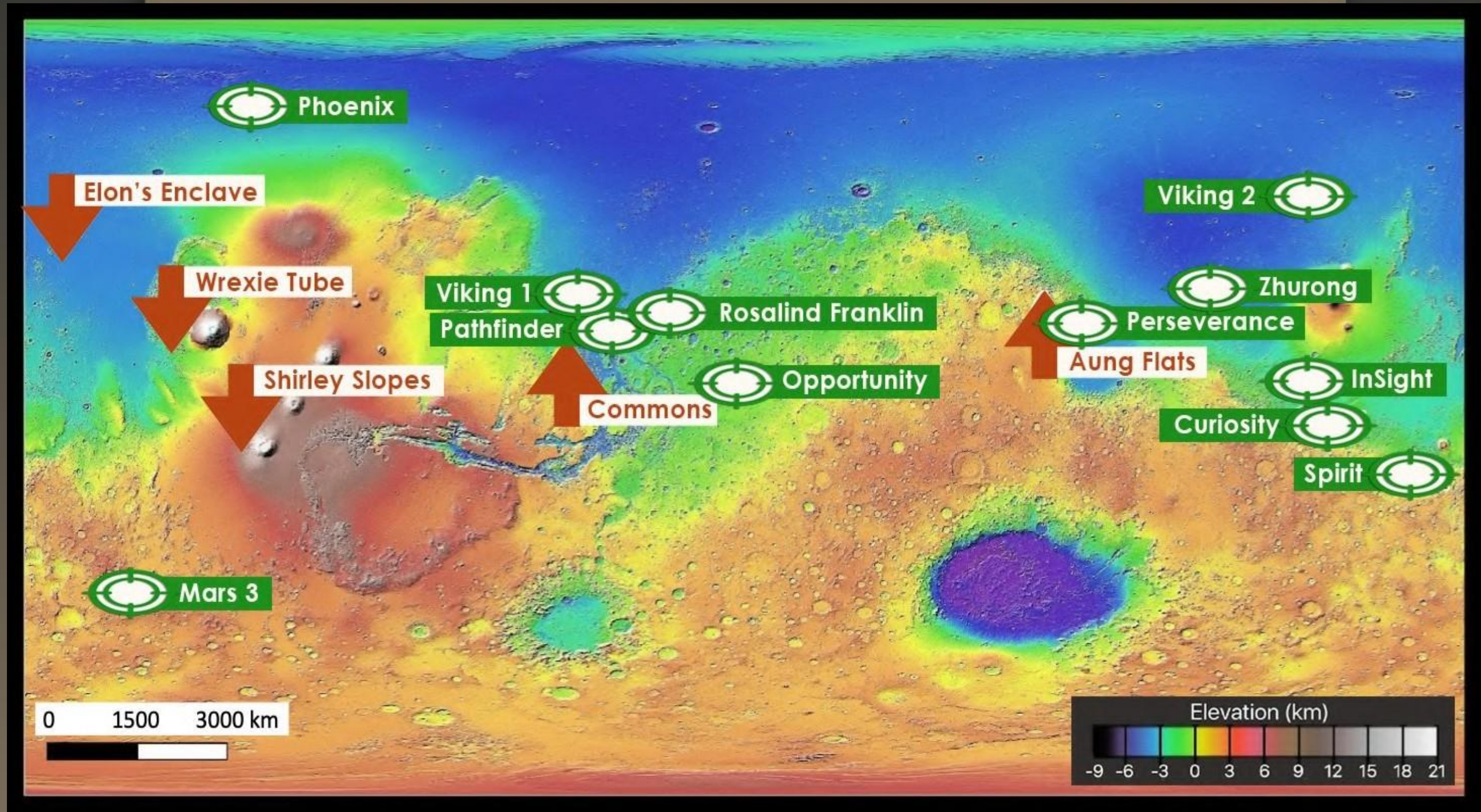
A few scattered settlements have taken hold. Those living and working in them have established reliable infrastructures and have built comfortable and functional habitats.

With less time required for day-to-day survival, settlers can spend more time considering ways to augment and improve their Martian lives and communities.

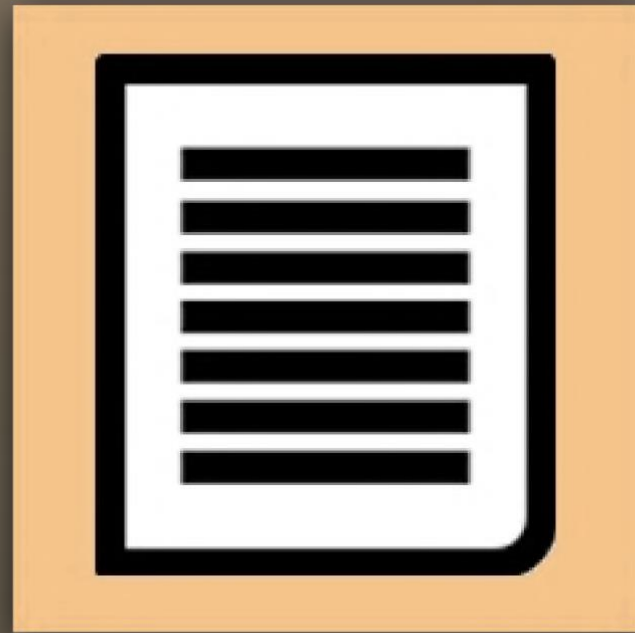
How do they do this?

MODEL MARS

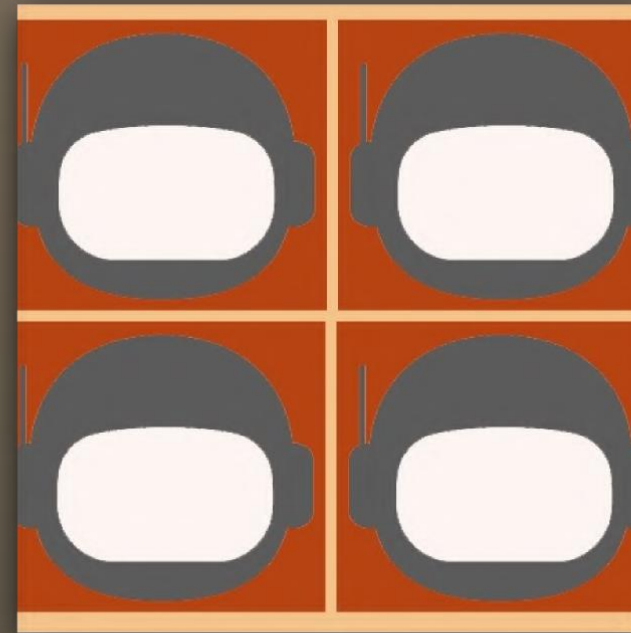
We created fictional SETTLEMENTS and a MARSPORT (Commons).



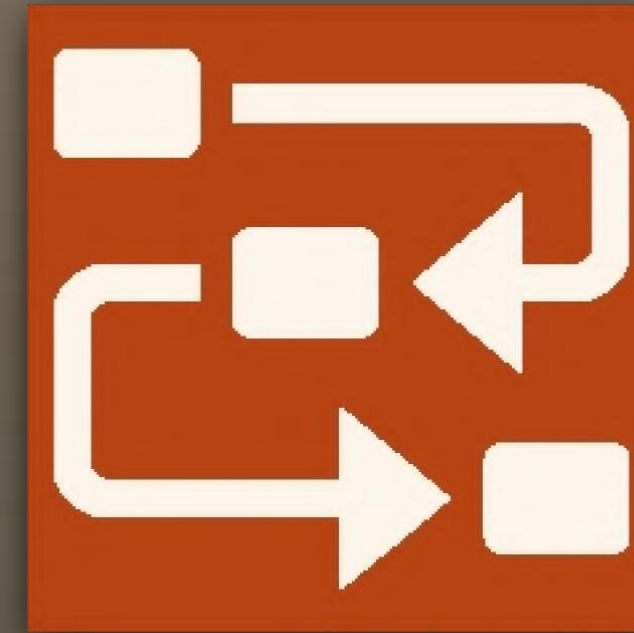
Mars Mean Orbital Laser Altimeter Map (after Smith 2001)



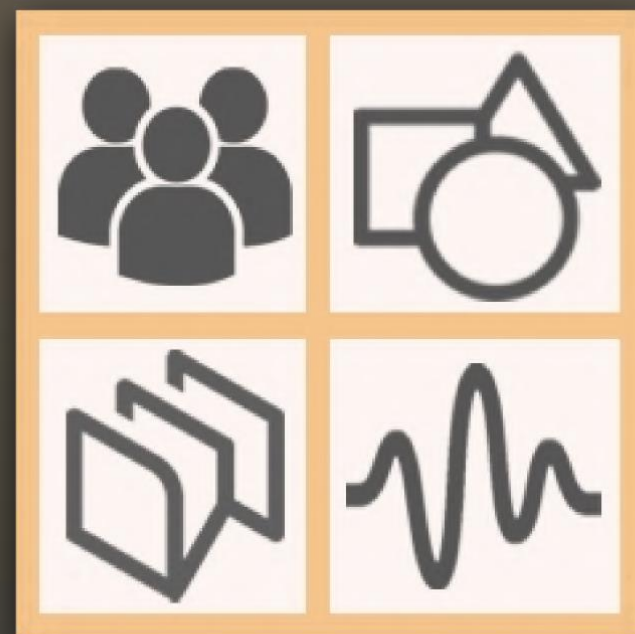
STORIES



TEAMS



JOURNEYS



ARTIFACTS



MUSEUM



CONVENING

"Using teamwork to end up with an artifact is a lot cooler than you thought something could be before you did Model Mars."
Youth Participant

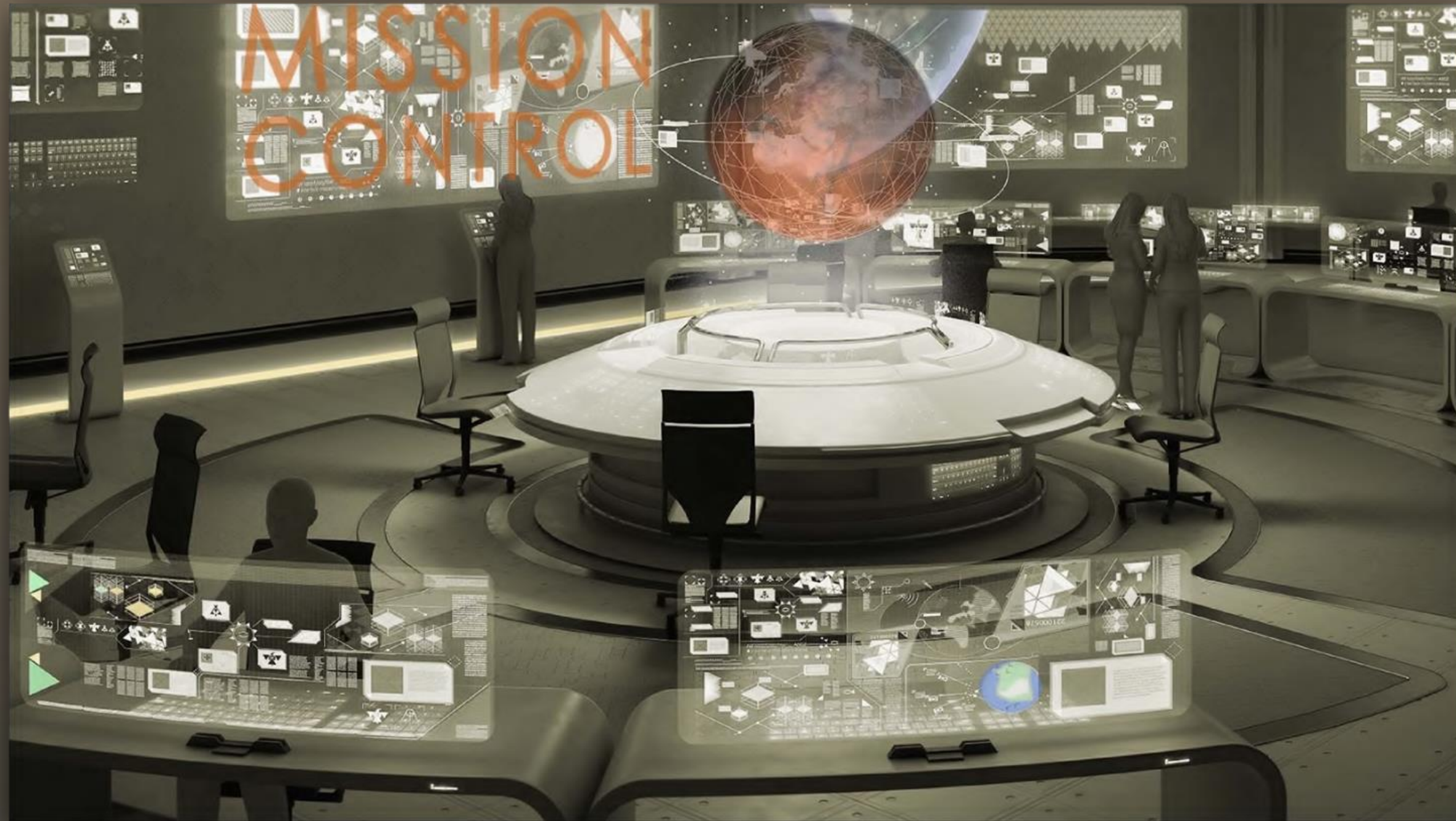
MODEL **MARS** The co-founders checked in regularly with Envoys and Teams.



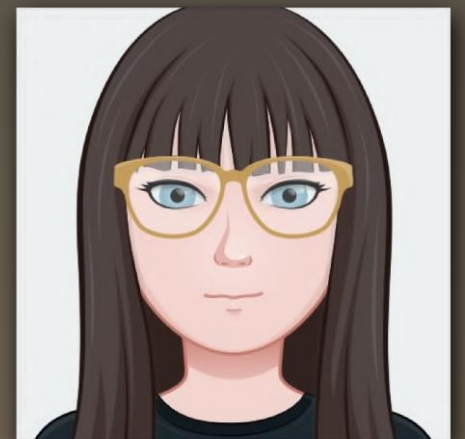
Jennifer Breslin



Rakhi Rajani



Jen Blank



Jan Millsapps

“Mission Control”, in The Commons

MODEL MARS

Our PROTOTYPE TEAMS had diverse geography, resources, ages, and backgrounds.



- 4 Teams
- 5 Countries
- In person & Virtual meetings
- Adult “ENVOYS”

MODEL **MARS** Teams traced their journey elements to the UN Sustainable Development Goals.



“If we are on Mars in the future, it is because things on Earth have largely been fixed.” Youth Participant.

TAKE A JOURNEY THROUGH THE ARTIFACTS FOUND IN THE SETTLEMENTS...



FOUND ON THE SHIRLEY SLOPES

A need for companionship identified by the Inter-galactic Coalition for the Pursuit of Justice

Enter the world of companionship...



IN AND ABOVE THE WREXIE TUBE

Unusual factory manufactures products to meet critical Martian needs...

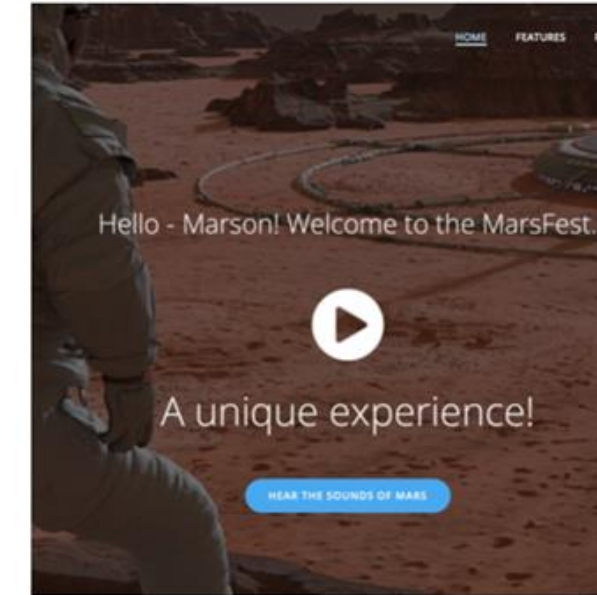
Explore the factory and see what's inside...



IN THE AUNG FLATS

A way to preserve and revisit memories of community members who are no longer there, based on significant items from among their possessions.

See the Remembrance Vessels...



IN ELON'S ENCLAVE

Marsfest brings all Martians together to celebrate the planet's distinctive cultural expressions, including a unique soundscape that can be heard on Earth.

Find out about Marsfest and listen to a sample tune...

MODEL MARS

In parallel, one team developed the first virtual MARS MUSEUM, with support from the Museum of London.

MARS MUSEUM

[Mars Museum](#) [Mars Museum Vision](#) [Exhibition Narrative](#) [Exhibits](#)

WELCOME TO THE MARS MUSEUM

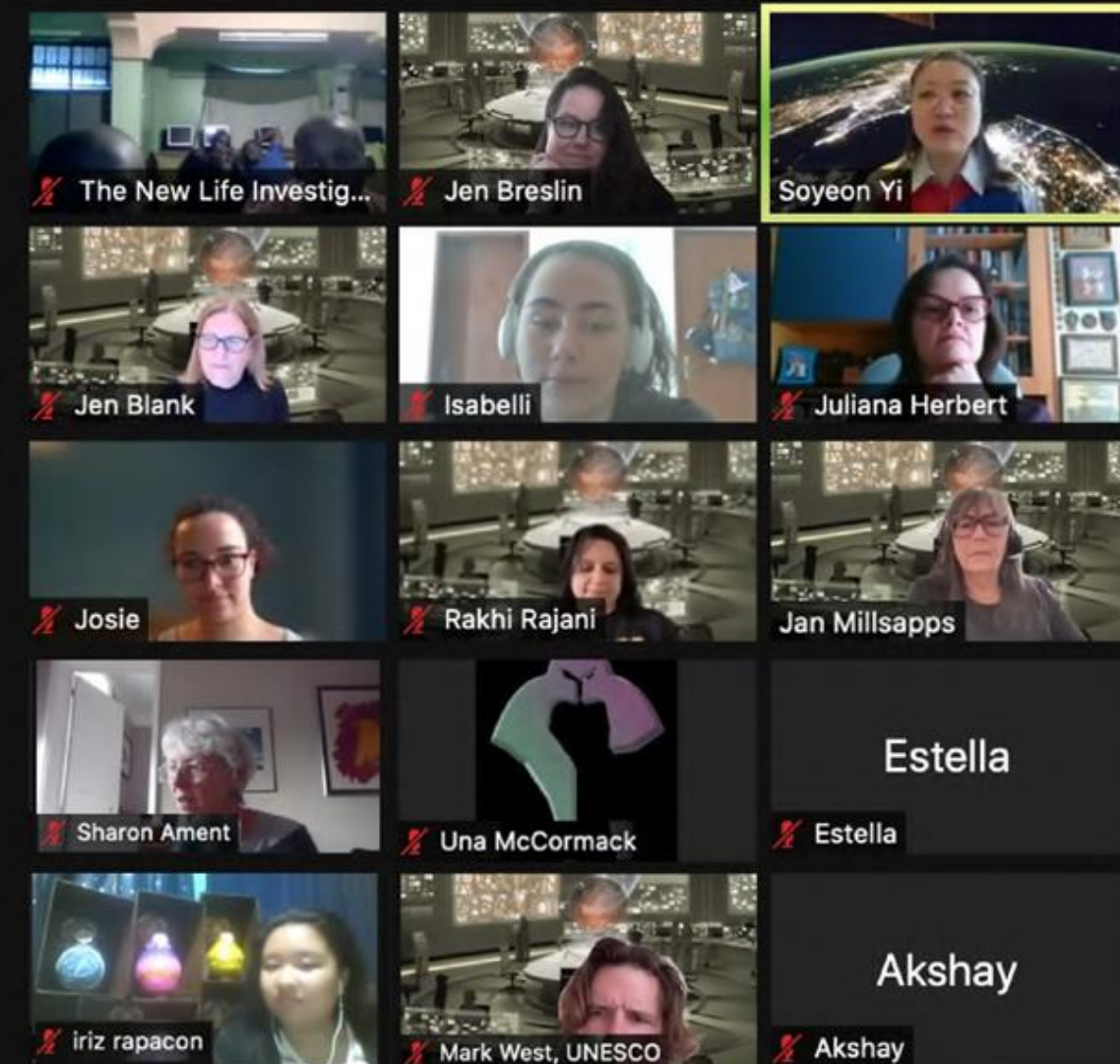


[Exhibition Narrative](#)

www.ModelMars.org



ASTRONAUT SOYEON YI



"A great chance to interact with like-minded people globally; meet astronauts, education experts, space enthusiasts." – MM Envoy

MODEL MARS

The Prototype outcomes realized our hopes and goals including.....

Building Skills of Youth:

- STEM
- Arts and Humanities
- 21st Century Skills
- Futures Literacy



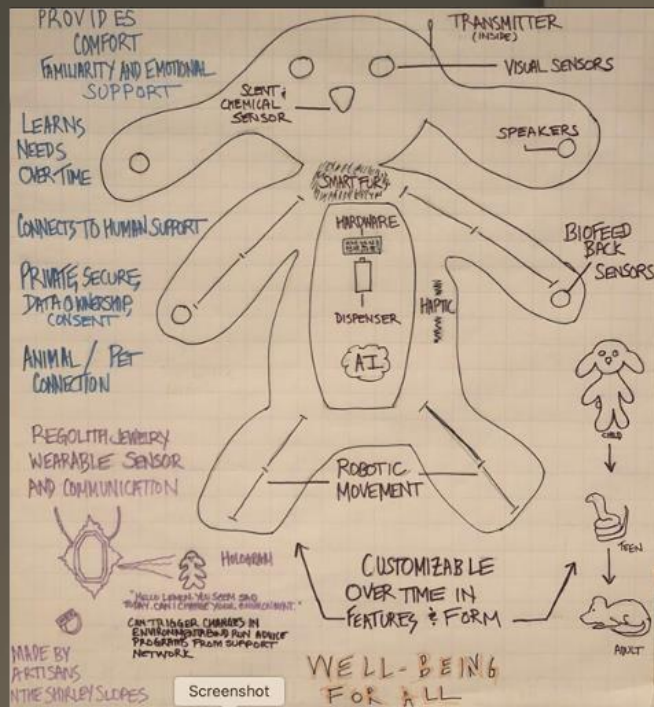
MODEL MARS

The Prototype outcomes realized our hopes and goals including.....



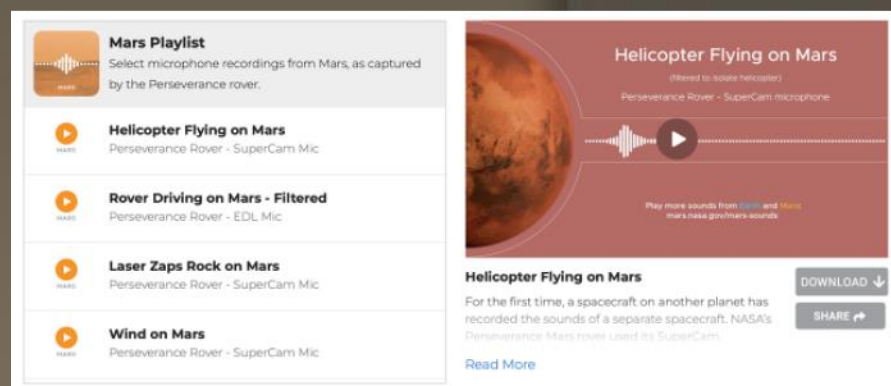
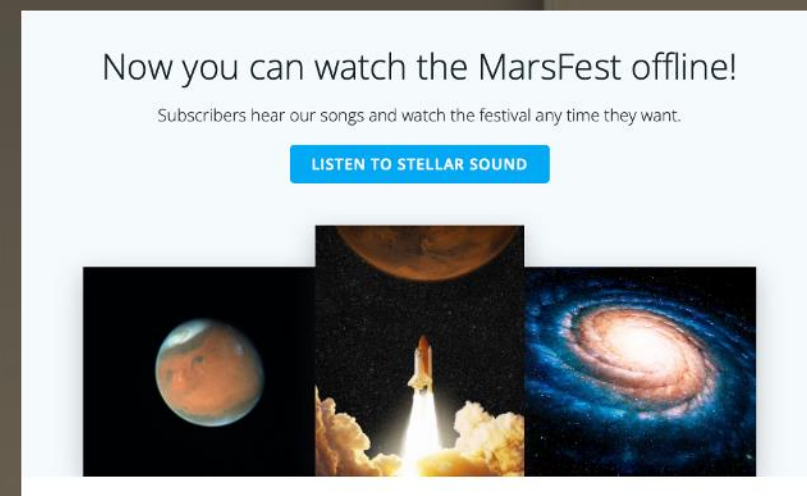
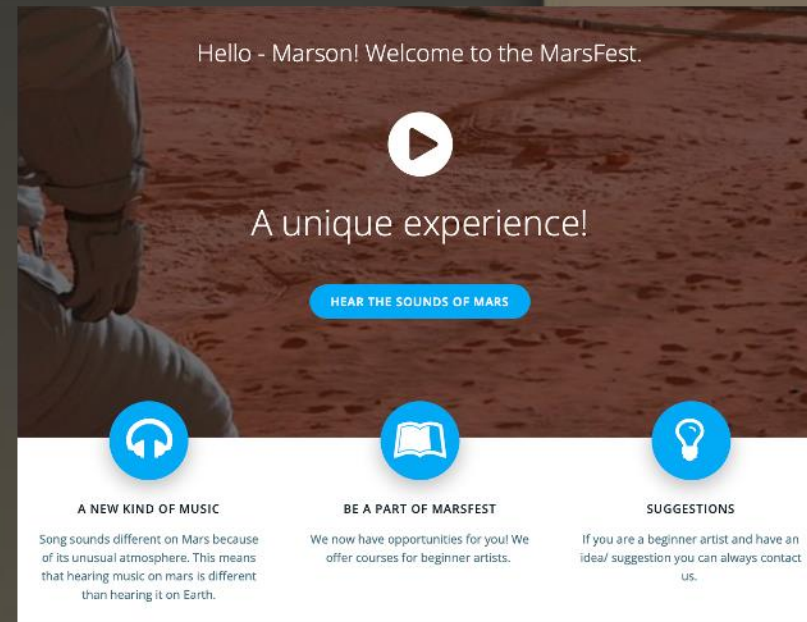
Stimulating Change:

- New mindsets
- New models
- New solutions for Earth and Space



REMEMBRANCE VESSELS





Democratizing Space:

- Broadening participation in space
- Reaching under-served and represented groups
- Exposure to career opportunities



Lessons for Space for Women

Engaging Young Women

- New Space Narratives
- Women Leaders and Participants
- Gender Responsive Content
- Cross-disciplinary Exposure
- Earth Applications
- Different Styles of Participation

Supporting Educators / Mentors

- Training and Professional Development Incentives
- Different Roles

Envoys and Advisors



Melkizedek Owuor, Renice Owino, Thais Russomano, Juliana Herbert, Susan Murabana, Daniel Chu, Frazer Swift, Josie Wood

CREATIVE CONTRIBUTORS



Storytellers: **Alessandra Pacini (Astrophysicist, Space4Women)**

Shayla Redmond (Analog Astronaut)

Una McCormick (Science Fiction author)

Mapping: **Nicole Barbadelias (Chief HiRISE Targeter)**

ORGANIZATIONAL PARTNERS



TUNAPANDA



TRAVELING TELESCOPE



INNOVASPACE



MUSEUM OF LONDON



SPACE & EXTREME ENVIRONMEN...



BLUE MARBLE SPACE INSTITUTE



LOSTIN



MADAME MARS PROJECT



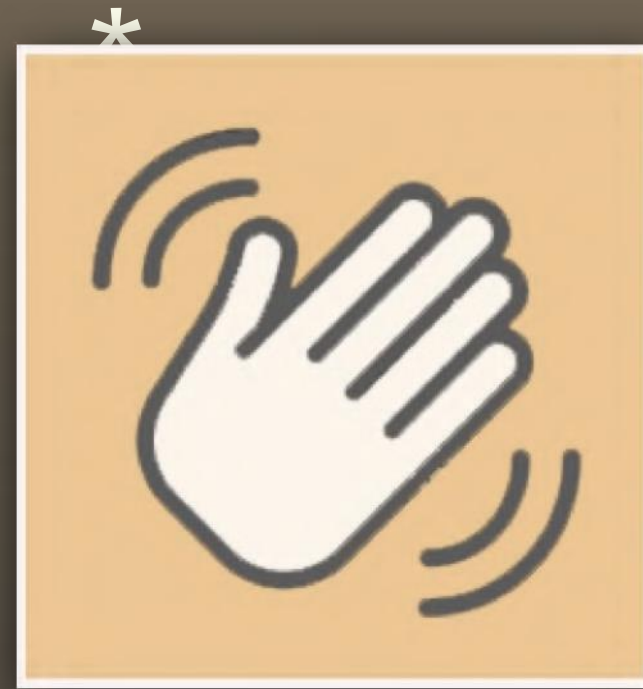
MODEL*MARS*

modelmars.org
marsmuseum.online

jennifer.breslin@modelmars.org

MODEL *MARS*

marson



*Martian greeting meaning peace, harmony, wholeness, completeness, prosperity, welfare, and tranquility